

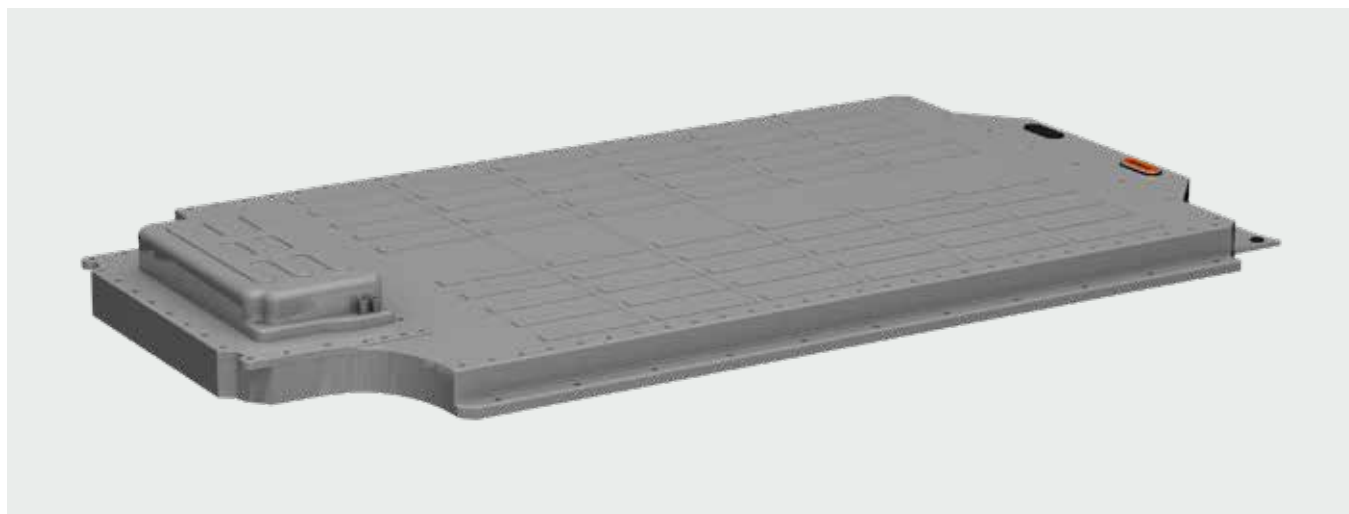
Collection points and specialist retailers SENS traction batteries collecting and transporting

- Specialist retailers associated with the SENS eRecycling system are authorised to collect SENS traction batteries.
- SENS traction batteries may only be removed and packaged by specialist personnel, who must comply with the manufacturer's specifications. The batteries must be handled with care.
- If SENS traction batteries cannot be removed by the specialist retailer, this task must be separately organised and carried out by a company specialising in such work.
- SENS traction batteries must be protected from the elements and stored in accordance with the applicable fire safety regulations. Protection from the elements refers to fixed structures such as buildings, covered structures or containers.
- Lithium batteries must be transported in accordance with the provisions of the Agreement concerning the International Carriage of Dangerous Goods by Road (ADR) and, for transports for the purpose of disposal or recycling, additionally in accordance with the provisions of the Ordinance on Movements of Waste (Verordnung über den Verkehr mit Abfällen/OMW).
- The recycling company reserves the right to charge for additional work in the event of poor delivery quality.



Defective, damaged or otherwise safety-critical batteries that could react dangerously during transport (such as by generating heat or flames) must be packed in UN special containers.

Correct identification



If the condition of the battery cannot be assessed, it must always be stored and transported with the greatest care and in accordance with the strictest regulations.

Condition



Green – the battery is functional and has no defects or major damage.

- Transport as hazardous goods (UN 3480) according to ADR packaging instruction P 909, transport category 2.
- Transportation for disposal: special ADR specification 377 applies.



Orange – the battery is not operational and has one or more major defects, but its damage is not safety-critical.

- Transport as hazardous goods (UN 3480) according to ADR special specification 376 and packaging instruction P 908, transport category 2.



Red – the battery is severely damaged and in a critical or undefined state.

- Transport as hazardous goods (UN 3480) according to ADR special specification 376 and packaging instruction P 911, transport category 0.
- Such batteries are usually from vehicles that have been in a crash or vehicles with fire or water damage. It must be assumed that dangerous heat generation or even fire may occur during transport.

Classification

- SENS traction batteries that are transported for the purpose of disposal or recycling are considered hazardous waste.
- SENS traction batteries may only be transferred to approved companies.
- No cross-border transport is permitted without prior authorisation (notification) of the Federal Office for the Environment (FOEN).

Containers

Containers must be designed for the corresponding weight. The following can be used:

Battery intact, undamaged (green)

Transport for disposal:

- Durable packaging, no UN packaging required (packaging instruction P 909, paragraph 4)

Battery damaged/defective, but not safety-critical (orange)

Transport for disposal:

- UN packaging with approval for packaging group II required (packaging instruction P 908)

Battery in a safety-critical or undefined condition (red)

Transport for disposal:

- UN special packaging with heat and fire safety and approval for packaging group I required (packaging instruction P 911)

Load securing

- Batteries must be secured in the transport container.
- The road traffic legislation and subsections 7.5.7.1 to 7.5.7.3 of the ADR must be observed with regard to load securing.

Labelling/designation of the goods and transport vehicles

- The relevant legal requirements regarding the transport of dangerous goods and, where applicable, waste apply.
- Packages containing lithium-ion batteries must be marked with UN 3480 (minimum letter height 12 mm) and the hazard label 9A (minimum 10 × 10 cm).
- For transport of waste according to ADR, it is also necessary to include the inscription “LITHIUM BATTERIES FOR DISPOSAL” or “LITHIUM BATTERIES FOR RECYCLING” and, in accordance with OMW, the inscriptions “Special waste/ déchets spéciaux/rifiuti speciali” and waste code (16 06 97), as well as the corresponding OMW accompanying document number.
- Transport units must be marked with orange plates on the front and rear (ADR 5.3.2.1.1).

Documents

The transport crew must carry the following documents during transport:

- Transport document according to chapter 5.4 ADR
- Written instructions according to subsection 5.4.3.4 ADR, in languages understood by all members of the vehicle crew
- For transport of waste, it is also necessary to carry a OMW accompanying document (this can replace the ADR transport document)

Transport

- Loading and unloading are the responsibility of the sender or recipient.
- There must be personnel present to load or unload.

Further regulations from hazardous goods and waste law for the companies involved

- Appointment and notification of a trained Hazardous Goods Officer (HGO). Companies that ship, package, load, unload or transport hazardous goods are subject to this requirement.
- Instruction of all involved employees according to chapter 1.3 ADR (general hazardous goods instruction, task-related instruction, safety instruction).
- Transport by a driver with a valid ADR certificate.
- Use of a transport unit authorised for the carriage of hazardous goods, fully equipped according to section 8.1.5 ADR and marked with orange plates.
- Transfer of hazardous waste only to recipients with the appropriate waste management permit and retention of the OMW accompanying documents (5 years).

Minimum collection quantity

- Collection points: **no pick-up** is possible
- Specialist retailer: a SENS traction battery

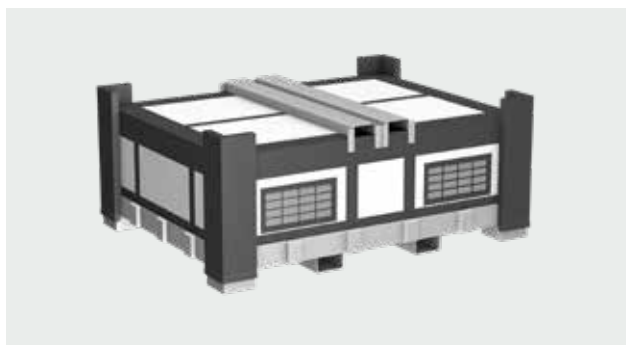
Contact

If you have any questions, please contact SENS eRecycling.

+41 43 255 20 00
info@sens.ch

www.sens.ch

Accepted containers



Unacceptable delivery quality

